



Volume 30, Number 2, August 2016  
[www.wlmd.org](http://www.wlmd.org)

## THE 2016 ANNUAL MEETING & BUDGET HEARING

Will be held Thursday September 8 at the Norway Town Hall. The meeting will begin promptly at 7 pm. All residents and landowners are encouraged to attend. Annual meetings are always very important, with a number of votes taken on various issues. The proposed budget for the year, the agenda and the minutes from the 2015 meeting are included in this newsletter.

**Aquatic Plants (Weeds):** Milfoil continued to be a minimal problem this year. Curly-leaf pondweed, which dies off in mid-summer, was much more dense than previous years, growing thick early in the year, then dying off. Native plants are abundant, covering much of the lakebed. Some of the native plants, like Chara, continue to be abundant and can cause a problem for boaters near shore.

**Invasive Species:** We continue to face a threat from a new, highly invasive aquatic plant called Starry stonewort (*Nitellopsis obtusa*). Starry stonewort (SSW) has been found in five lakes in Wisconsin: Big Muskego and Little Muskego in Waukesha County, Long Lake (Ke-Nong-Go-Mong Lake) in Racine County, and Silver Lake and Pike Lake in Washington County. The invasive was also found in a very large lake in central Minnesota. The Long Lake Protection District is working very hard to prevent SSW from spreading and to implement an aggressive control program. WLMD is doing everything possible to prevent getting this invasive. Property owners and lake users can do their part by being sure only clean boats and equipment enters Wind Lake. More information is provided later in this newsletter.

**Algae:** Filamentous algae is a slimy mat-type algae that accumulates along the shorelines. Nitrogen levels in runoff fuels filamentous algae growth early in the season. Filamentous algae was down from previous years.

**Weed Chemical Treatment:** We have conducted chemical treatments this year, mostly targeting navigational areas and filamentous algae. All treatments are done under supervision of the DNR. Although landowners may request that all plants be treated, DNR may refuse to allow their treatment. We take every effort to open up areas when allowed. Treatments can only be conducted when either invasive species are present, or when a nuisance condition exists. A nuisance condition is interpreted as plant growth that interferes with lake use.

**Harvesting:** Harvesting was done for 7 days. The harvester focused on making sure navigational lanes were open for boaters, and cutting the milfoil and curly-leaf on the NW side of the lake.

**Road-side Weed Pick-up:** The road-side weed pick-up program continued this summer to give landowners a place to go with the raked lake plant debris. Because the amount of invasive weeds continued to be down this year, the amount of roadside weeds picked up was also lower than last year. Although the board initially decided to discontinue the pickups, heavy floating plants in late August and September led to the program being re-instated. Pickups are done once a month.

**Goose Control:** The goose control program was conducted this year. The USDA was able to roundup 48 geese (13 adults and 35 juveniles) from one location. There were also two small groups of three each, but those were not rounded up because they were out on the water. Goose control will continue next summer.

**Boat Inspection:** The WLMD partnered with the Coast Guard Auxiliary and Wisc. Power Squadron conducted the boat inspections. Twenty-five boats were inspected at two locations, the DNR boat launch and Sportsman's.

## **MINUTES - Annual Meeting Sept 10, 2015**

Present: R. Mohr, B. Rosenquist, J. Marks, R. Schopp, K. Aron, J. Bellante, and approx. 60 residents.

J. Bellante called the meeting to order at 7:00 pm.

Introductions of the board were made.

The 2014 Annual Meeting minutes were approved as printed.

An update on the past year's activities was given, including:

- The water quality of Wind Lake is out of the eutrophic (high nutrients) range. This is what the district has been trying to achieve since its inception and the development of the first lake plan. The clarity is now very clear. The alum treatment is continuing to have a very good impact on the quality of the lake.
- Weed growth - native plants were dominant in the lake and milfoil continued to be a non-factor, saving the district a lot of money in weed control.
- No harvesting was conducted in the summer of 2015 because of the lack of milfoil.
- A little more was spent on chemical treatments primarily to open access for residents through the native plants.
- Starry Stonewort (SSW) is a highly aggressive invasive species that has now been found in Little Muskego Lake, Big Muskego Lake, Long Lake, Silver Lake (Washington Cty) and Pike Lake. Surveys of Wind Lake have not found it yet. Maintaining a Clean Boat Launch is critical to preventing its spread.
- Geese - Pickup was done in 2015, but because of an incoming storm, only 1 of the 2 groups were collected. A total of 71 birds were removed.

### **Disinfecting Your Boating Gear**

DNR has new rules in place for cleaning your boat, motor, and other gear to help prevent the spread of invasive species. These very stringent rules must be followed by DNR employees, agents and service providers, and some permittees who must take steps to decontaminate boats, gear and equipment when transporting equipment. Members of the general public who use boats and/or participate in water recreation are required to follow the decontamination procedures in s. NR 40.02(44).

Here is a link to the DNR website which outlines the various steps for Aquatic Invasive Species Control:

<http://dnr.wi.gov/topic/Invasives/prevention.html>

<http://dnr.wi.gov/topic/invasives/disinfection.html>

- Roadside pickup - will not be conducted in 2016.
- Lake levels - the County is now operating the dam.

Plans for 2016 include harvesting and chemical treatments, but not shoreline pickups.

J. Bellante read the Budget Resolution 1-2015. After a motion and 2nd. Discussion included questions on weeds, lake levels, dredging, buoys, and the authority of the board and the residents. On a call for the question, the motion carried, approving the budget as presented.

J. Marks was up for re-election as commissioner. J. Bellante called for nominations from the floor. J. Marks and Gretchen Bellante were nominated for the position. The two candidates were asked to give a short presentation of themselves and why they are seeking the position. After the vote, J. Marks was re-elected to the board for a three year term.

The 2016 Annual Meeting date will either be Sept 1 or Sept 8, depending on the Green Bay Packers schedule.

J. Bellante asked if there was any other business to come before the meeting.

A resident asked why the annual meeting cannot choose the Chairman. K. Aron stated that the Wisconsin State Statutes dictate the procedures and that it is the job of the board to select its officers. A request from the floor to change that was made, but the WLMD cannot change State Statutes.

J. Marks responded to a question about the plant management policy of the district by saying he is opposed to the current policy.

Other questions/statements focused on the dam. J. Marks said that Wind Lake is a low-risk dam and that the dam is not being operated correctly. He said that the pressure on the gates is intense because only one gate is being used.

The meeting was adjourned at 8:20 pm.

**PLEASE DO YOUR PART TO PROTECT WIND LAKE!**

**ANNUAL MEETING & BUDGET HEARING AGENDA - WLMD**  
**Thursday September 8, 2016 at 7 pm Norway Town Hall**

Call to Order - Pledge of Allegiance

Introductions - Board Members, Guests

Approve Minutes of 2015 Annual Meeting

Project Update - A review of 2016 and plans for 2017

Budget Hearing and Approval - Resolution 1-2016:

Whereas the Board of Commissioners has proposed the enclosed budget for the WLMD for the year July 1, 2016 through June 30, 2017;

And Whereas, notice of the Budget Hearing and Annual Meeting was provided to residents and landowners;

And Whereas, the Board has proposed the annual special charge be assessed at \$220 lakefront, \$130 canal and \$90 off lake;

And Whereas, the Board recommends the projects presented herein;

And Whereas, the 1997 annual meeting gave the Board authority for short term borrowing to cover grant reimbursements not yet received;

And Whereas, the 2010 Annual Meeting approved the levy of irrevocable taxes to repay the State Loans;

Therefore Be It Resolved, that the projects included in the budget, as may be amended by the Annual Meeting, are hereby approved;

Be It Further Resolved, that the WLMD is authorized to bill property owners as directed by the Annual Meeting;

Be It Further Resolved, that the WLMD board is authorized to apply for available grants;

Be It Further Resolved, that the authorization for short term borrowing to cover grant reimbursements not yet received is continued through this budget year;

**Be It Further Resolved, that the WLMD board shall take swift, and immediate action if / when invasive species such as starry stonewort are found in Wind Lake;**

Be It Further Resolved, that the special charges approved by this Resolution shall be payable from July 1, 2016 to October 1, 2016 at which time unpaid special charges will be placed on the December 2016 tax rolls and will **include a \$20 surcharge.**

Election of Commissioner – Current board member Bruce Rosenquist's term is up for re-election. Nominations from the floor are welcome.

Set date for 2017 Annual Meeting - First or Second Thursday of September (Depending on Packer Schedule)

New Business

Adjourn

A Board of Commissioners meeting will be held immediately following the Annual Meeting to elect officers. The next regular Board meeting is scheduled for October 27, 2016, at the Norway Town Hall.

8/8/2016	<b>2016/2017 PROPOSED ANNUAL BUDGET</b>							
	<b>A</b>	<b>B</b>	<b>C</b>	<b>D</b>	<b>E</b>	<b>F</b>	<b>G</b>	
	<b>REVENUE</b>							
		<b>2012/2013 Actual</b>	<b>2013-2014 Actual</b>	<b>2014/2015 Actual</b>	<b>2015/2016 Proposed</b>	<b>2015/2016 Actual</b>	<b>2016/2017 Proposed</b>	
1	Special Charges & Assessments	107073	105,664	131,933	126,310	127,376	126,310	
2	Grants							
3	Loan Rcts/Payments - alum	20708	25,778	23,601	20,508	21,379	18,891	
4	Property Transfer Fee			210	300	540	300	
5	Interest	80.7	147	128.66	100	197	100	
	<b>Total Revenue</b>	<b>127861.7</b>	<b>131,589</b>	<b>155,873</b>	<b>147,218</b>	<b>149,492</b>	<b>145,601</b>	
	<b>EXPENSES</b>							
6	Meetings/seminars	54	516	1,524	2,000	1,377	2,500	
7	Postal Expenses	1,465	1,173	1,327	1400	1,427	1,400	
8	Office Equip/Maint.		368		100		100	
9	Office	33	411	87	300	140	300	
10	Phone/Faxes	486	488	486	500	453	500	
11	Publications	203	203	266	275	253	275	
12	Insurance	1,287	1,257	1,262	1,500	1,218	1,500	
13	Print/Publishing	910	1,087	878	1,000	1,259	1,500	
14	Mileage/per diem	4,800	4,800	4,800	4,800	4,825	4,800	
15	Misc	66	184	239	250	324	250	
16	Website	824	939	904	3,500	599	3,500	
17	Secy, Tech supp., DP	7,872	8,040	8,844	8,844	8,844	8,844	
18	Attorney	0		15	1,000		1,000	
19	Accountant	500	525		1,100	525	1,100	
20	Weed Control	70,544	45,261	total 41474	78,000	total 27363	78,000	
21	- harvesting	56012	30700	25675		12355		2
22	- Chem Treatment	8732	9061	12299		11108		2
23	- Roadside weed pickup	5800	5500	3500	0	1800	0	2
24	- Starry Stonewort expenses					2100		2
25	Aquatic Plant Survey/Plan (Harv Permit)	4,100					14,300	3
26	Engineer. Erosion				0	0	0	
27	USGS	8,144	8,308	8640	9257	9,257	10,000	
28	Fish Survey/carp removal							
29	Goose Control	1,467	0	0	2,516	2,516	3,000	
30	Land Maintenance-Properties	926		750	1200		1,200	
	S Wind Lk Rd property		575			800		
31	Contingency	0			4000		4,000	
32	Emergency Action	0			4000		4,000	
33	Non-lapsing State Fund loan payments							
	26220 S Wind Lk Rd	15,188	15,188	15,188	15,188	15,188	15,188	1
	Alum Treatment	36,350	36,350	36,350	36,350	36,350	36,350	1
34	Dam Operation	10,600	8,850	6,000	6,000	6,000	6,000	
	Dam Operation	7000	4500					
	Legal	2940	4350					
	Meetings/perdiem	660						
	<b>Total Expenses</b>	<b>165,819</b>	<b>134,523</b>	<b>129,035</b>	<b>183,080</b>	<b>118,718</b>	<b>199,607</b>	
	<b>Notes:</b>							
	<sup>1</sup> Amounts cannot be reduced: irrevocable tax approved at 2010 Ann. Mtg.							
	<sup>2</sup> Provided for informational purposes- see Line 20 for total plant control							
	<sup>3</sup> Must be done every 5 years to get a harvesting permit							
	Checking account balances June 30, 2016	2,697						
	Money market acct balance June 30, 2016	114,580						
	Dam operation account June 30, 2016	2,536						
	<b>Total available funds</b>	<b>119,814</b>						
	<b>Debt balance- property loan (110,000)</b>	39,450.25	(final payment 3/15/2019)					
	<b>Debt balance- Alum Loan (300,000)</b>	162,961.13	(final payment 3/15/2021)					

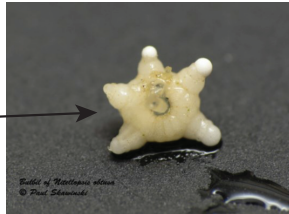


## Starry Stonewort

Starry stonewort (SSW) is actually an algae but it has the characteristics of a plant. It entered the USA through the St. Lawrence Seaway. It is now found in lakes in New York, Michigan, Indiana and Wisconsin. SSW is similar to Chara (muskgrass) that is very common in Wind Lake. SSW is often initially found in areas with Chara, making it difficult to notice the SSW.

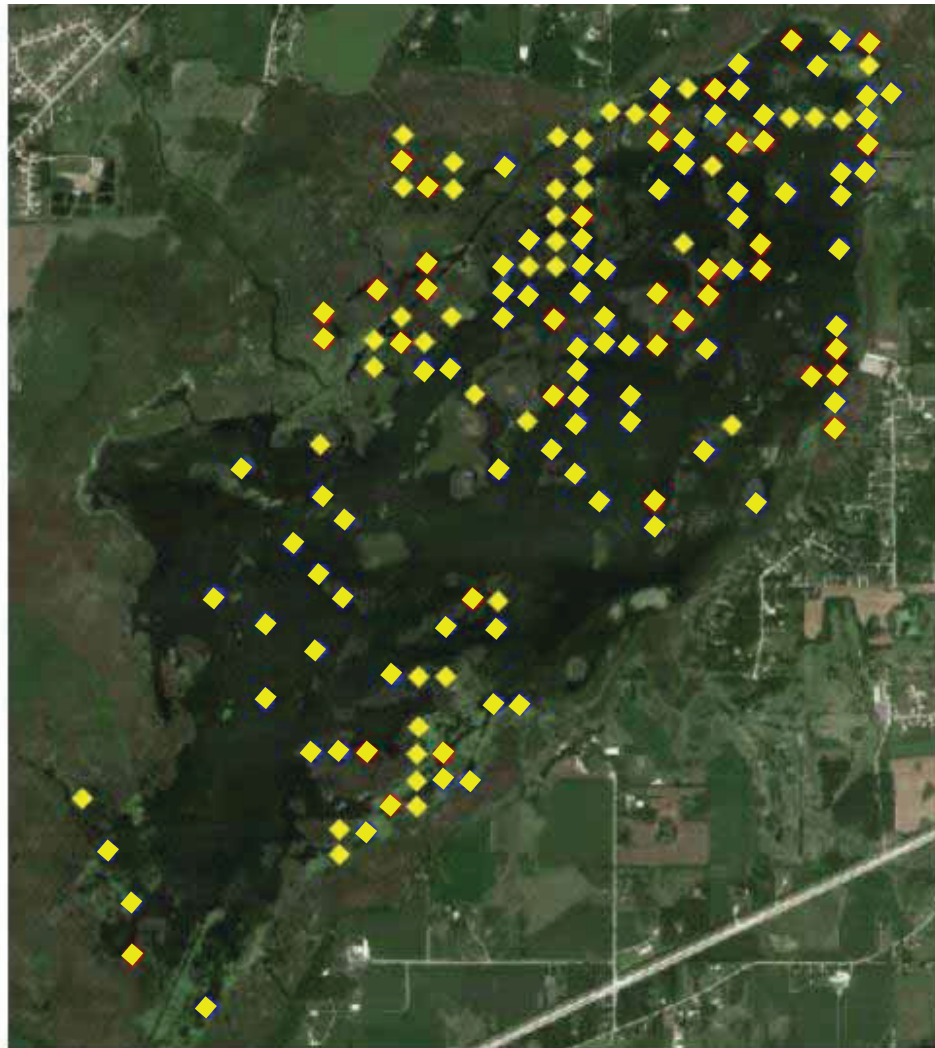


Photo: Grand Valley State University



According to Dr. Doug Pullman, the ecologist who first identified SSW in Michigan in 2006, states that "*Starry stonewort may be the greatest challenge that has ever faced lake management professional and lake user groups..*".

Dr. Pullman and others believe that preventing the spread is key. **Please help keep SSW out of Wind Lake.**



Source: Marine Biochemists

Total # Sites: 152

Locations on Big Muskego with SSW, 2015

## **WIND LAKE WEBSITE/EMAIL**

www.wlmd.org

info@wlmd.org

## **BOARD OF COMMISSIONERS**

Lake District Line	514-3238
Joe Bellante	895-6694
Richard Mohr	895-7927
Ralph Schopp	414-531-6020
Jim Marks	895-7872
Bruce Rosenquist	895-3942

Commissioners meetings are usually held the 4th Thursday of every month, with the November and December meeting combined. Meetings begin at 7:00 pm at the Norway Town Hall. Everyone is welcome to attend.

## **NEED MORE INFORMATION?**

If you do, check out our website. The site has:

- Meetings, schedules, agendas, and minutes
- Information about who to contact for various activities.
- Links to other lake-related sites
- Information about who to contact for various activities
- The latest lake depth map of Wind Lake
- Other special notices as needed are also posted on the site.

You can also send an email to info@wlmd.org to be put on a list to receive meeting notices and updates. Note that your email is then considered public information.

ADDRESS SERVICE REQUESTED

Wind Lake Management District  
30910 Royal Hill Rd.  
Burlington, WI 53105